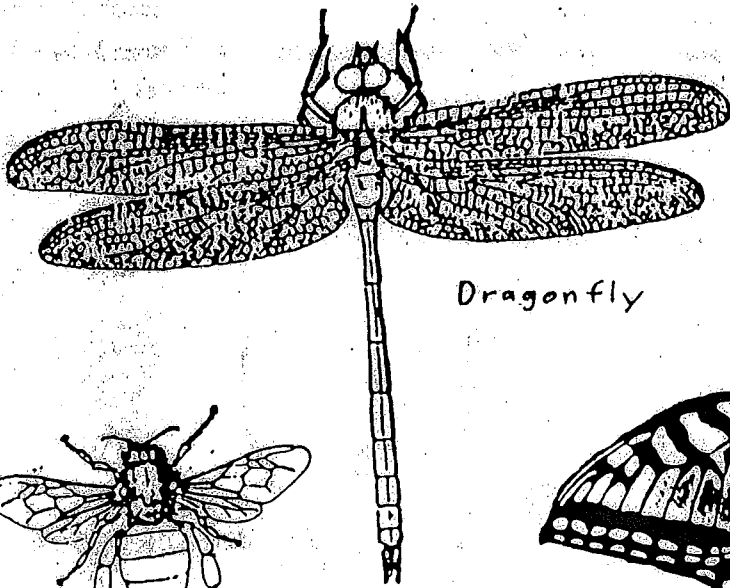
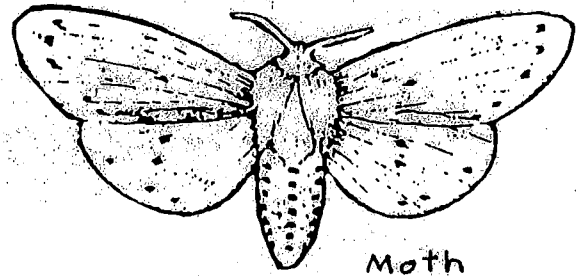


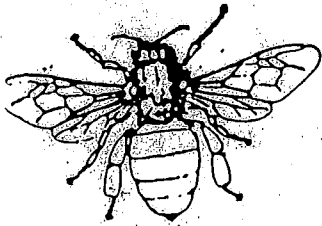
INVERTEBRATES



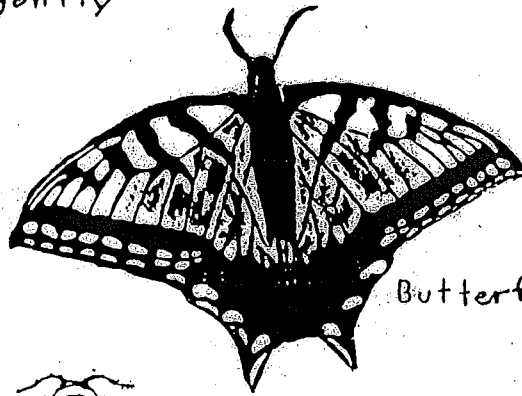
Dragonfly



Moth



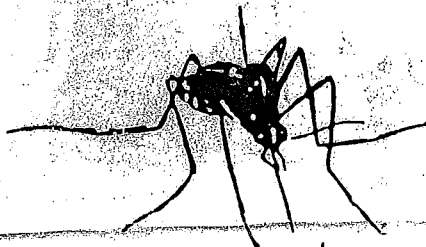
Bee



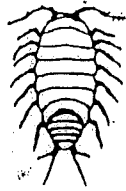
Butterfly



Grasshopper



Mosquito



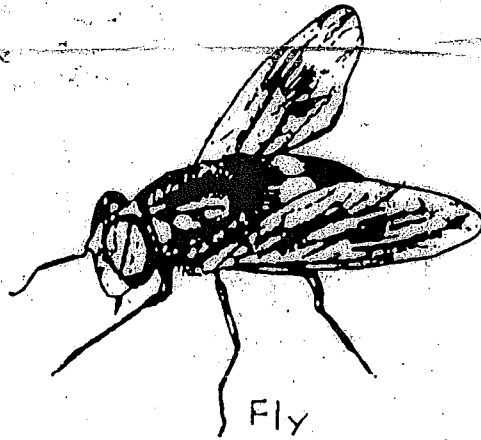
Sow bug



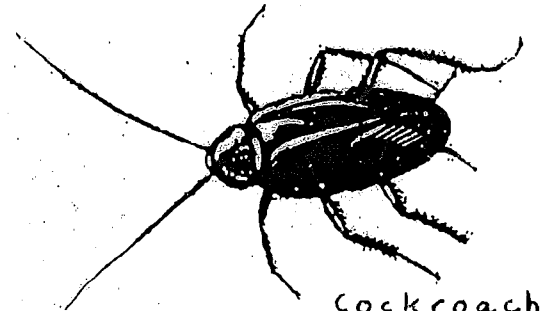
caterpillar



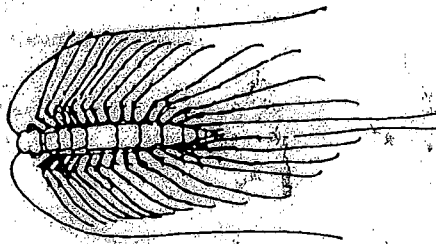
Spider



Fly



Cockroach



Centipede



True bug



Beetle



Millipede



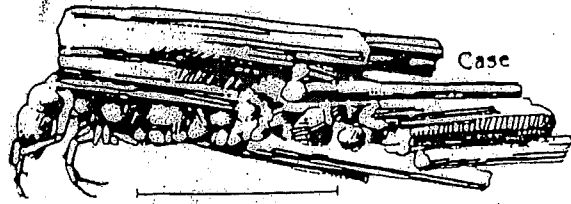
Earth worm

Stream Insects & Crustaceans



Identification Card

Scenic Rivers Program



Case

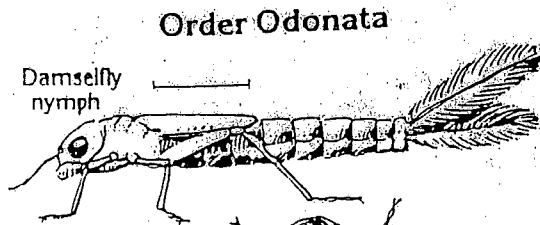


larva x 3



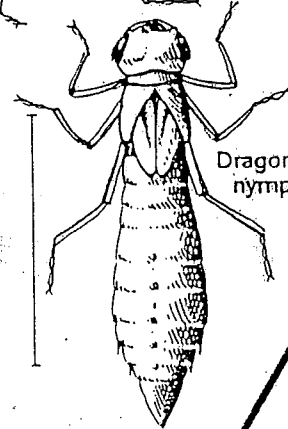
Case

Caddisflies: Order Trichoptera

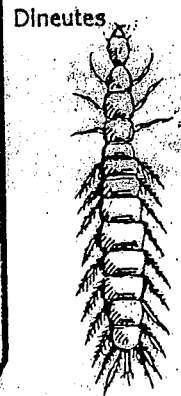


Damselfly nymph

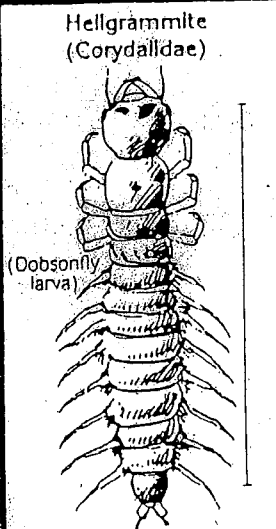
Order Odonata



Dragonfly nymph



Dironetes



Hellgrammite (Corydallidae)

(Dobsonfly larva)

Suborder Megaloptera



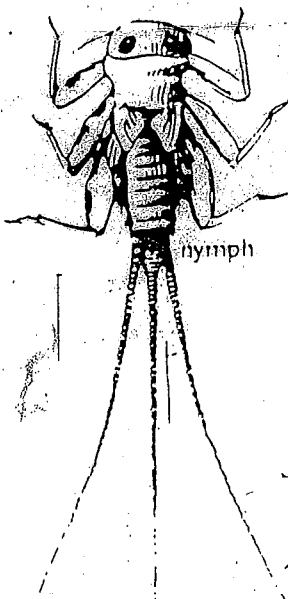
Psephenus-larva



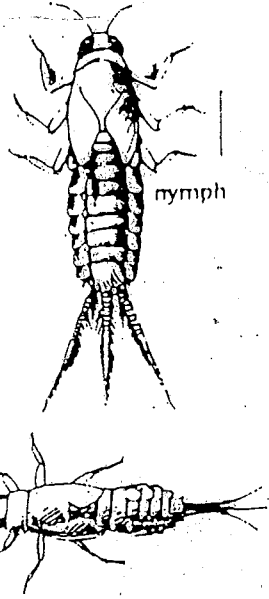
Beetles: Order Coleoptera



Water-Penny Beetle

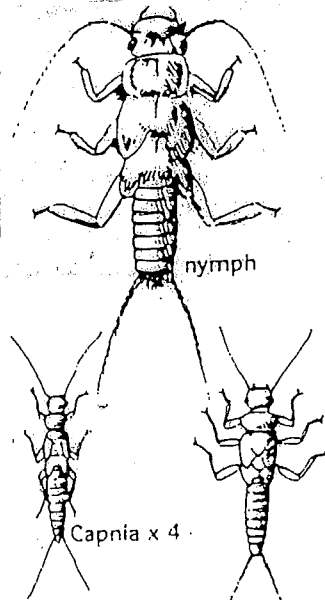


nymph

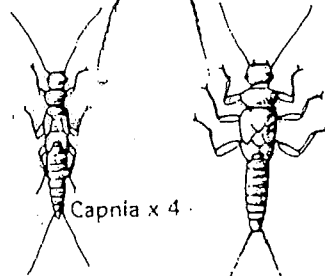


nymph

Mayflies: Order Ephemeroptera

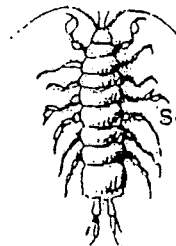


nymph



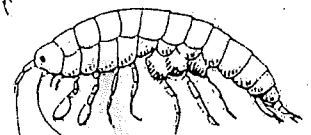
Capnia x 4

Stoneflies: Order Plecoptera

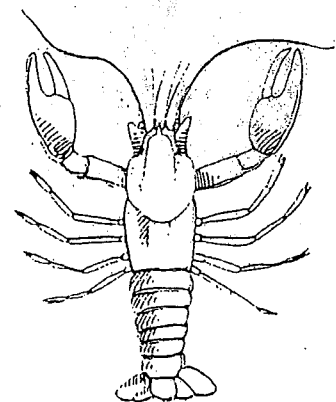


Sowbug (isopod)

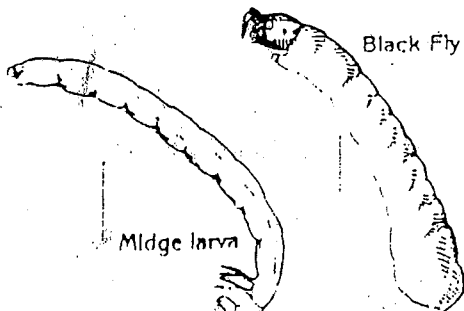
Crustaceans



Scud (amphipod)



Crayfish (decapod)



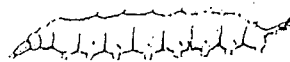
Midge larva



Black Fly larva



Tipula x 1 1/2



Atherix x 2 1/2

Flies: Order Diptera