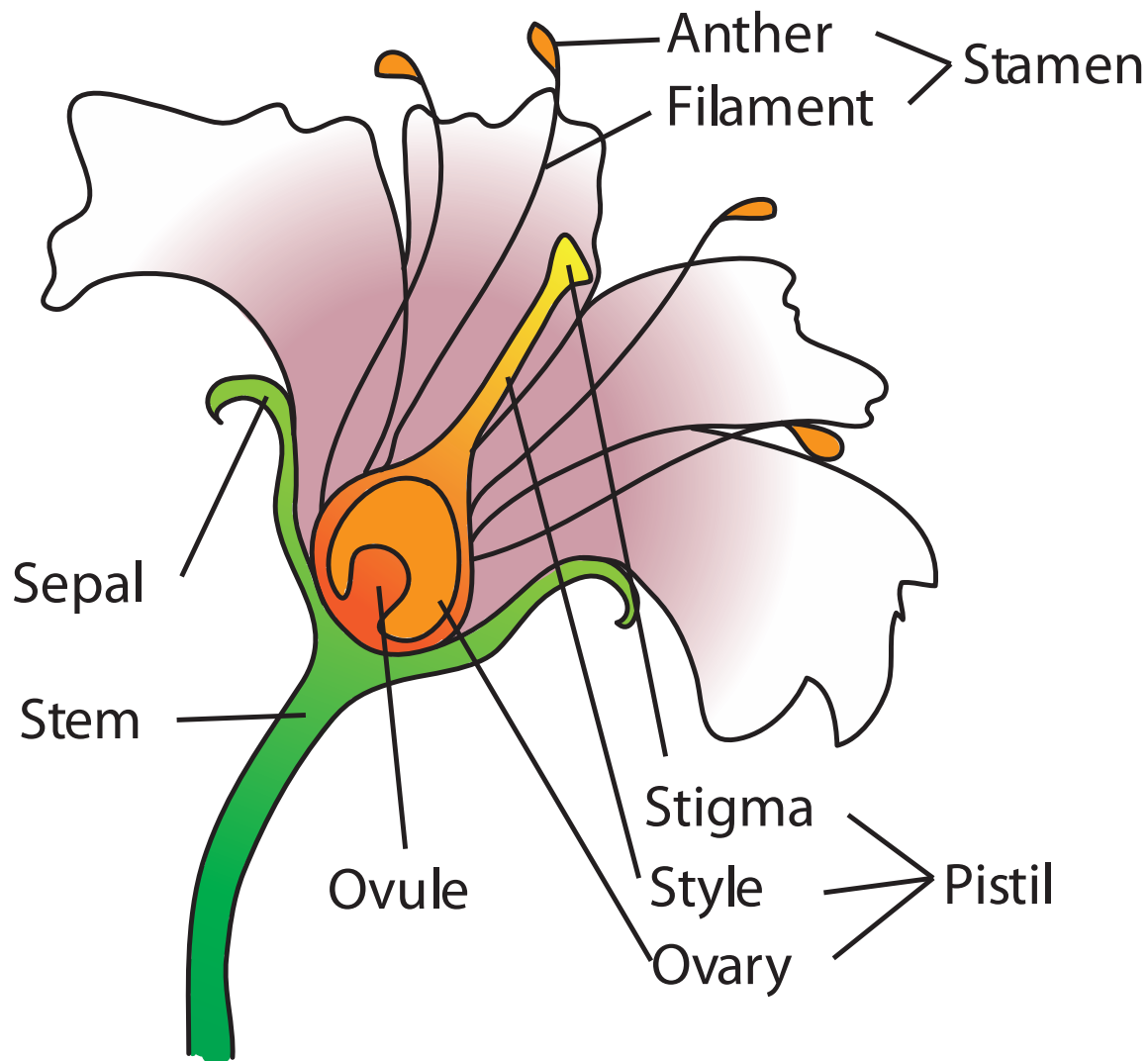


Anatomy of a Flower

Flowers may look very different, but most of them are made up of the same parts!



Anther: Contains the pollen.

Filament: The stalk supporting the anther.

Ovule: This will become the seed.

Stigma: The receptacle for the pollen.

Style: The stalk between the stigma and the ovary.

Ovary: This surrounds the seed as it matures. In some plants, this becomes a fruit.

Sepal: These are modified leaves that surround the flower when it is still a bud.

Stem: The stalk that supports the whole flower.

Petal: These are modified leaves that surround the reproductive parts. Often they are brightly colored to attract pollinating insects and animals.